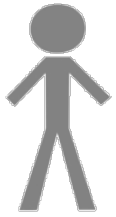


Verifone VX 520 GPRS / VX 520c Backplate

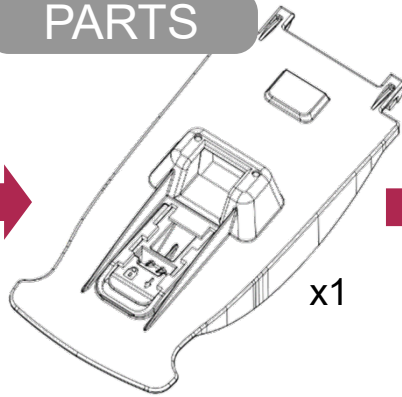
Quick Installation Guide

TOOLS

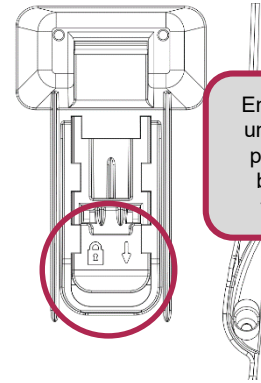


5 min

PARTS

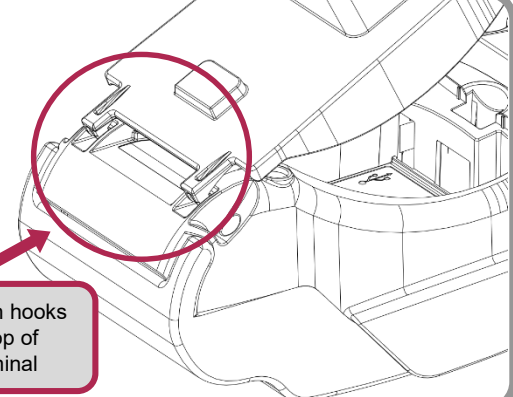


1a



Ensure in unlocked position before fitting

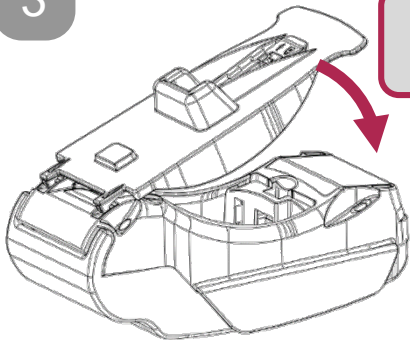
1b



Fit both hooks at top of terminal

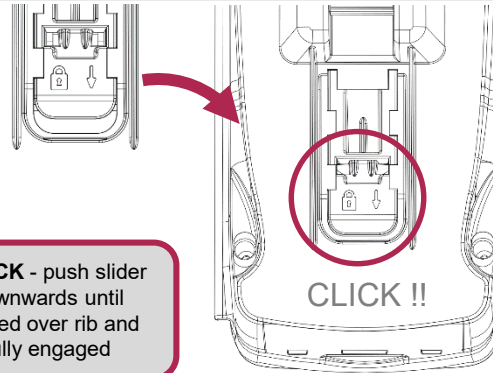
3

Rotate backplate down

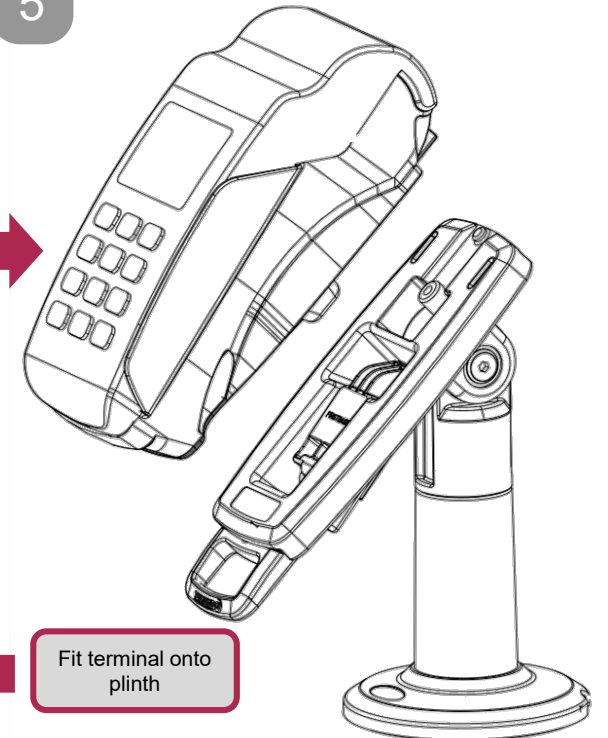


4

CHECK - push slider downwards until clicked over rib and fully engaged



5



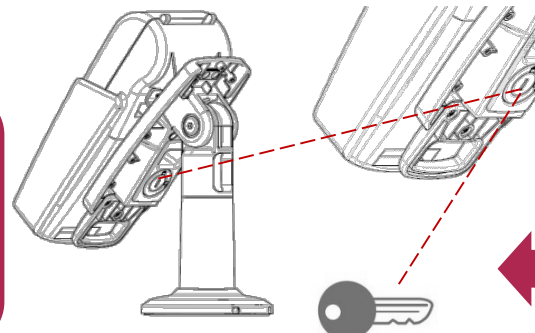
Fit terminal onto plinth

OPTIONAL

SAFEBASE OPTION

To lock device, turn key clockwise then remove key.

To unlock, first ensure key is fitted then turn counter-clockwise.



To remove device

