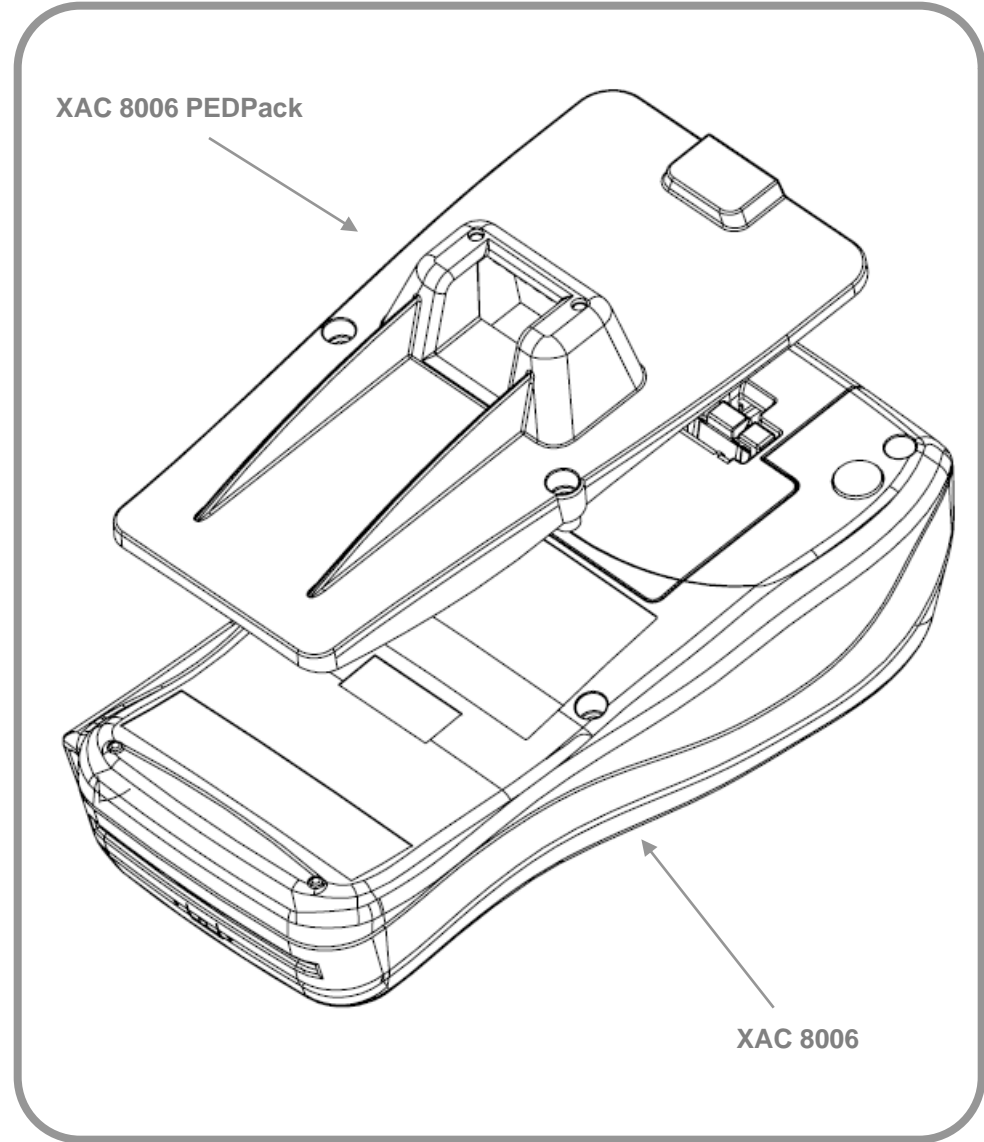


# XAC 8006 PEDPack

## Quick Installation Guide



### TOOLS

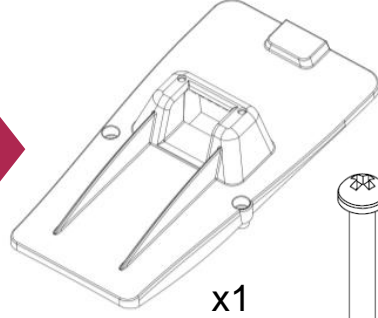
#### RECOMMENDED

Torque setting 40CNm  
for all screw fixings



5 min

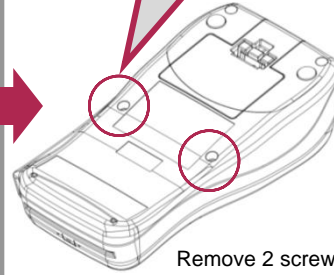
### PARTS



x1

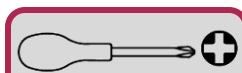
x2

1

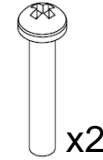


Remove 2 screws  
in PED first!

2

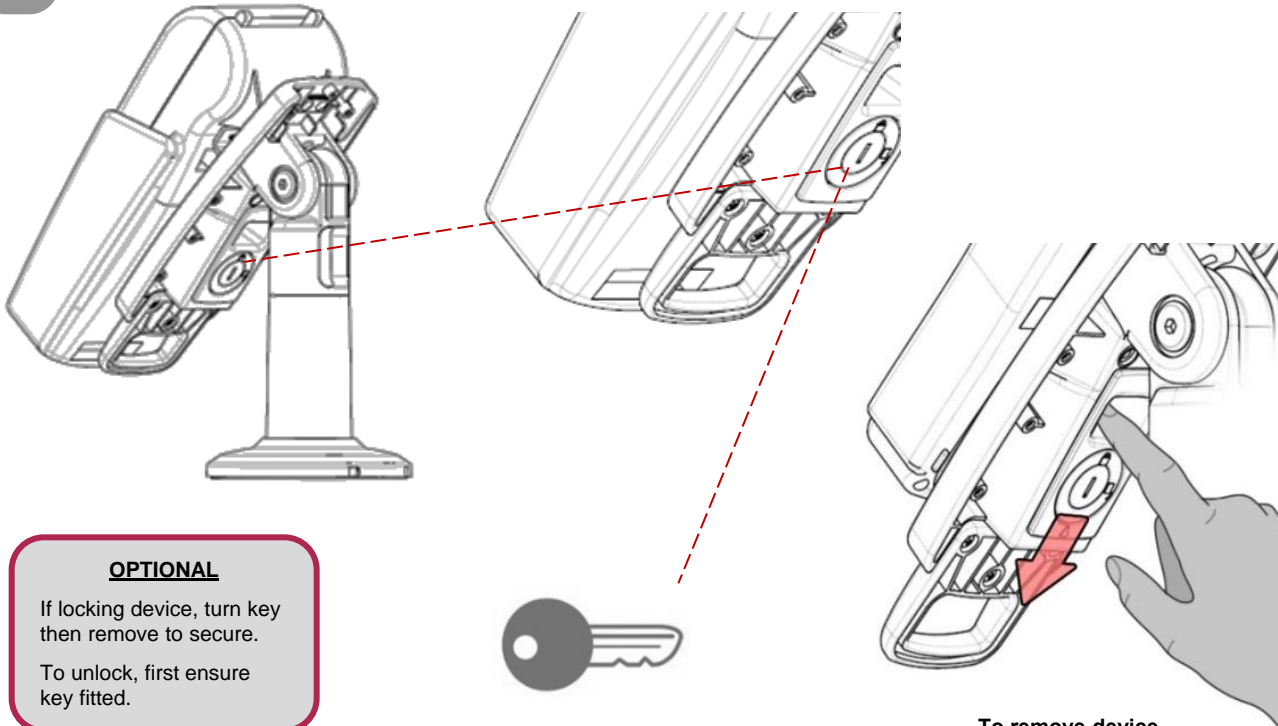


Torque setting 40CNm



x2

4



#### OPTIONAL

If locking device, turn key  
then remove to secure.

To unlock, first ensure  
key fitted.

To remove device...

3

